

Rapid Response Fund Payment Request No. 09/2016

Funds Sent To: Iglesia Luterana Costaricense, ILCO

Amount Sent: USD 100,000

Date: 29 November 2016

Details of Response

Emergency: Hurricane Otto

Date of Emergency: 24 November 2016

ACT Requesting Member(s): Iglesia Luterana Costarricense, ILCO

I. NARRATIVE SUMMARY

DETAILS OF THE EMERGENCY

Hurricane Otto, category 2 (in the Saffir-Simpson Scale), hit Costa Rica on November 24th 2016. Otto killed at least nine people and forced thousands to evacuate when it battered Nicaragua and Costa Rica with hurricane-force winds and torrential rains, before moving out into the Pacific Ocean. To date, in Costa Rica 214 communities have been affected, 1183 houses are damaged, as well as roads, bridges and public and private infrastructure. 11,853 people remain evacuated and the alerts have dropped to yellow but in the meantime the official institutions are receiving more damage reports on rural flooding, overflowing of rivers, streams and creeks, as well as landslides, with a negative impact in livelihoods and basic services facilities such as electricity, communication and water for human consumption. National government entities are taking care of awareness raising among the population, and conducting evacuations in vulnerable areas as well as road rehabilitation. There is a high risk of outbreaks of waterborne diseases due to the contaminated stagnant waters and the poor sanitary conditions left by the hurricane in the overcrowded locations where people remain in shelters.

ACTIONS TO DATE, AND EMERGENCY NEEDS

The ACT Forum in Costa Rica, through the Lutheran Costa Rican Church (ILCO by its acronym in Spanish), has deployed staff and volunteers to the communities of Sarapiquí, Delta and Sixaola establishing coordination with local authorities and local networks to provide assistance. ILCO will distribute food kits and non-food items, among the families most affected in these selected locations. ILCO has storage facilities and equipment in order to facilitate the support to the affected population.

PROPOSED EMERGENCY RESPONSE**OVERALL GOAL:**

To alleviate the suffering of people most affected by hurricane Otto providing humanitarian assistance in the communities of Sarapiquí, Delta and Sixaola, of the province of Heredia and Limón, respectively.

OBJECTIVE(S) OF THE EMERGENCY RESPONSE:

- 1) To provide basic food kits for 285 households affected by the hurricane.
- 2) To promote hygiene through the delivery of hygiene kits and sanitation activities with 285 households.

PROPOSED ASSISTANCE:

The project aims to provide food packages and hygiene kits (2 deliveries) to 285 affected households in the communities of Sarapiquí, Delta and Sixaola, in the province of Heredia and Limón, respectively.

Food Security:

Distribution of non-perishable food to affected households with food rations consisting of the main products of the local basic diet, including rice, beans, vegetable oil, tuna, salt, sugar, for the distribution, local committees are responsible to provide coordination.

Indicator

570 food packages have been distributed to 285 households, a ration per household, twice in a period of 4 months.

Hygiene Kits

285 households will receive hygiene kits containing: toilet paper, chlorine, wet towels, antiseptic gel, bandages, toothbrushes, toothpaste and alcohol, sanitary pads, soap and shampoo. Activities will be carried out in the selected communities leading by professional staff and volunteer's network. The methodology used by ILCO for the project is facilitating broad communitarian participation through its local structure.

Indicator

570 basic hygiene kits have been distributed to the same number of households, a ration per household, twice in a period of 4 months.

TARGET POPULATIONS

Target population are previously identified households who have been most affected by the effects of hurricane Otto. The project covers 4 communities affected by the floods. These communities are located in the Caribbean coast in the north of the country.

The project will provide assistance to families who have not received similar assistance from other organizations and have no means to access these interventions on their own. Especially for food distributions, priority will be given to female-headed households, households with a higher percentage of non-earning members; households with higher number of elderly or persons with disabilities who lost their belongings and their agricultural crops were destroyed. The project is targeting 285 households and 1,425 people.

	COMMUNITIES	REGION / ZONE	HOUSEHOLDS	INDIVIDUALS
	2	Sarapiquí	143	715
	1	Delta	71	355
	1	Sixaola	71	355
Total	4		285	1,425



The selection criteria are as follows:

- Poor households who lost their belongings and their agricultural crops were destroyed.
- Female headed households
- Households who have not received support from the government or private institutions.
- Households with persons with disabilities
- No discrimination based on race, religion, sex or any other condition in the beneficiary communities.

IMPLEMENTATION ARRANGEMENTS:

ILCO is responsible for project implementation, in collaboration with the Evangelical Lutheran Church in America (ELCA) and Bread for the World (BftW), as local member of ACT Alliance in Costa Rica. Staff of regional offices will be involved, as well as volunteers from the communities, organizing the implementation in the communities of Sarapiquí, Delta and Sixaola, and facilitating a participatory approach in the implementation.

COORDINATION:

ILCO serves as the overall coordinator of the response and will coordinate with others ACT forum members, Red Cross and local emergency committees. The Coordination will be established with the local governments and local networks in order to facilitate the implementation.

COMMUNICATIONS:

Communication will be established with relevant actors assisting this emergency. Regular report will be shared with the Alliance. Trainings and exchanges of experiences will be promoted with the communities in order to bring visibility to the intervention in the response.

PRINCIPLES AND STANDARDS:

ILCO will ensure mainstreaming the Core Humanitarian Standards (CHS) on Quality and Accountability into the response. Utmost attention will be given to beneficiary participation in project decision making processes, to ensure proper communication, and complaint handling. In addition, beneficiaries will receive all necessary information, particularly on the response components, assistances, and share of each person in order to ensure transparency.

A complaints handling committee will be established to collect information on complaints and to address them or, if it is beyond their responsibilities, it will be communicated to the field and head offices. ILCO will use their existing systems for receiving and providing feedback on complaints.

PLANNED IMPLEMENTATION PERIOD:

4 months, from 29th November 2016 to 29th March 2017.

HUMAN RESOURCES AND ADMINISTRATION OF FUNDS:

ILCO will bring the overall coordination to the response. The support of a Rapid Response Team (RST) person with experience in the ACT tools along the response, the coordinator of ILCO and the support of communitarian volunteers will guaranty the results of the humanitarian response. A coordinator will be hired to be in charge of the emergency response. The RRF will be carried out with the support of local network of community volunteers along with human resources of ILCO, government and private sector. Finances are managed by the Financial Accounting Department with a manager responsible who will create a single account for the project funds. This administration meets international standards established for such projects.

MONITORING AND EVALUATION:

The monitoring and evaluation activities consist of regular visits to follow up of achievement of results, and preparation of monthly situation reports. Team members will meet regularly to make appropriate decisions for successful implementation. A final report will be submitted in line with the formats provided by ACT.

REPORTING SCHEDULE

Type of Report	Due date
Situation reports	Monthly
Final narrative and financial report	31 th May 2017
Audit report	30 th June 2017

II. FINANCIAL SUMMARY/BUDGET

	Type of Units	No. of Units	Unit Cost <i>local currency</i>	Appeal Budget <i>local currency</i>	Appeal Budget USD
DIRECT COST					
Food security	Households	570	55,179	31452,030	56,164
Sanitation & hygiene Kits	Households	570	22,322	12723,540	22,721
<u>Other Sector Related Direct Costs</u>					
RRF Coordinator	Months	4	868,000	3472,000	6,200
RST	Months	4	504,000	2016,000	3,600
Per-diems	travel	12	50,000	600,000	1,071
Contribution to ILCO Financial Administrator	Months	4	280,000	1120,000	2,000
<u>Communication/visibility cost</u>					
Stickers	sheet	100	2,500	250,000	446
Banner	one	1	55,944	55,944	100
TOTAL DIRECT ASSISTANCE				51689,514	92,303

TRANSPORT, WAREHOUSING & HANDLING**Transport (of relief
materials)**

Hire/ Rental of Vehicles	Days	11	60,000	660,000	1,179
Fuel	travels	10	39,256	392,560	700
Shipping: kits food and hygiene	travels	2	700,000	1400,000	2,500
packing	unit	1,140	560	638,400	1,140
TOTAL TRANSPORT, WAREHOUSING & HANDLING				3090,960	5,519

TOTAL DIRECT COST	54780,474	97,821
--------------------------	------------------	---------------

INDIRECT COSTS: PERSONNEL, ADMINISTRATION & SUPPORTCommunications

Telephone and fax	Months	4	55,000	220,000	393
-------------------	--------	---	--------	---------	-----

TOTAL INDIRECT COST: PERSONNEL, ADMIN. & SUPPORT	220,000	393
---	----------------	------------

AUDIT, MONITORING & EVALUATION

Audit of ACT appeal	Estimate	1	1000,000	1000,000	1,786
---------------------	----------	---	----------	----------	-------

TOTAL AUDIT, MONITORING & EVALUATION	1000,000	1,786
---	-----------------	--------------

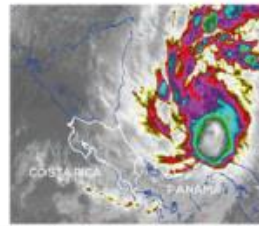
TOTAL EXPENDITURE	56000,474	100,000
--------------------------	------------------	----------------



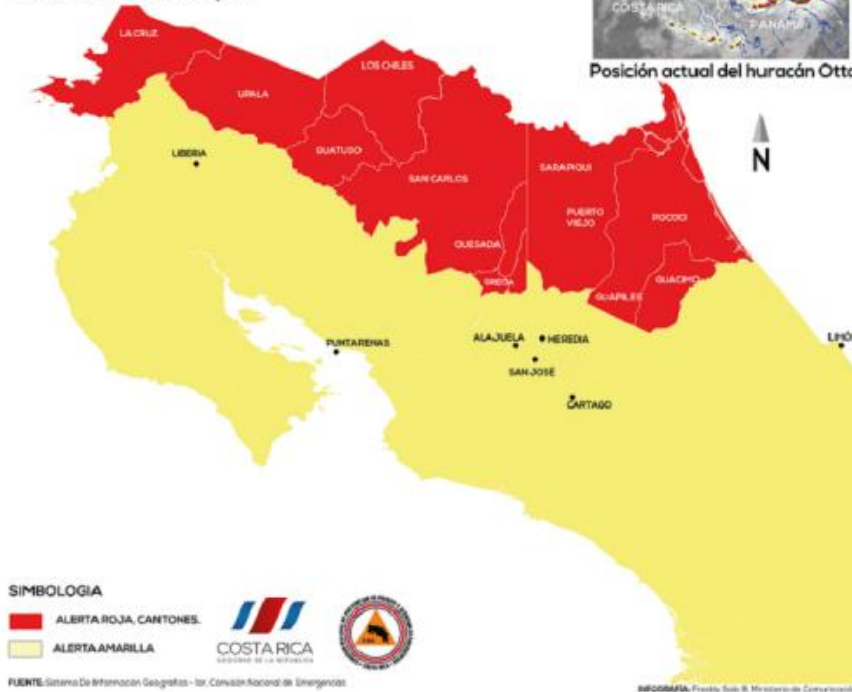
ANNEX .1 Affected Area

ALERTA ROJA

Actualización a las 2:30 p. m.



Posición actual del huracán Otto



ACTION

The ACT Secretariat has approved the use of US\$ 100,000 towards the budget from its Rapid Response Fund and would be grateful to receive contributions to wholly or partially replenish this payment. Should there be an appeal for this emergency, the RRF payment will be considered as an advance.

For further information please contact:

ACT Regional Representative – Latin America and the Caribbean, Carlos Rauda

(carlos.rauda@actalliance.org)

ACT website address: <http://www.actalliance.org>

Florine Jobin

ACT Alliance Humanitarian Officer